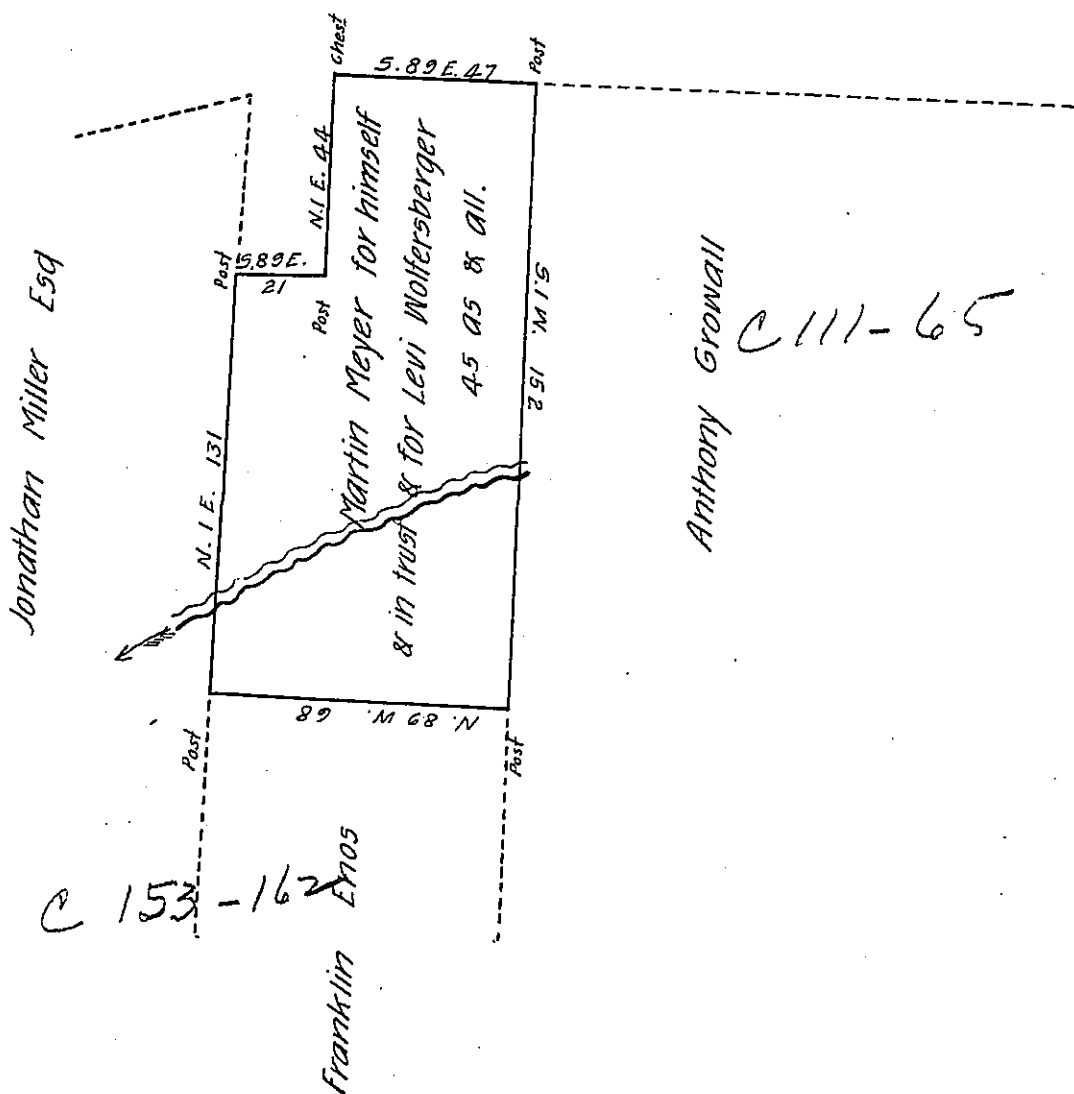


SIMON GEHART 1104909 40115



Situate in Milford Township Somerset County containing forty five acres & allowance Surveyed the 26<sup>th</sup> day of June A.D. 1857. In pursuance of a warrant dated the 22<sup>d</sup> day of May 1857 (by Martin Meyer) said warrant was granted to the said Martin Meyer & Levi Wolfersberger for 45 as.

Certified this 29<sup>th</sup> day of July A.D. 1857.

To John Rowe Esq. }  
 Surveyor General. }

Per Josiah P. Walker D.S.

IN TESTIMONY that the above is a copy of the original remaining on file in the Department of Internal Affairs of Pennsylvania, made conformably to an Act of Assembly approved the 16th day of February, 1833, I have hereunto set my Hand and caused the Seal of said Department to be affixed at Harrisburg, this third day of October 1906

*Isaac N. Simon*  
 Secretary of Internal Affairs.